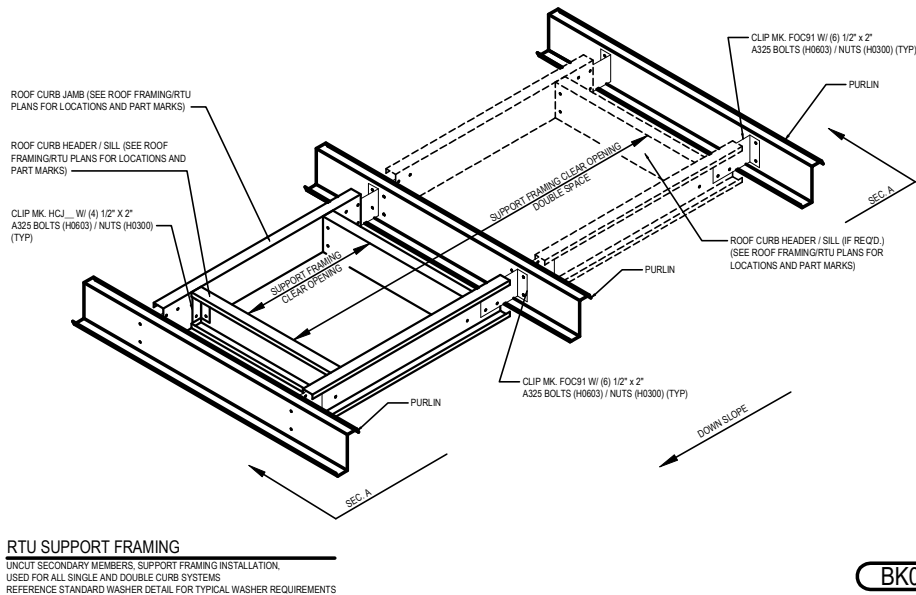
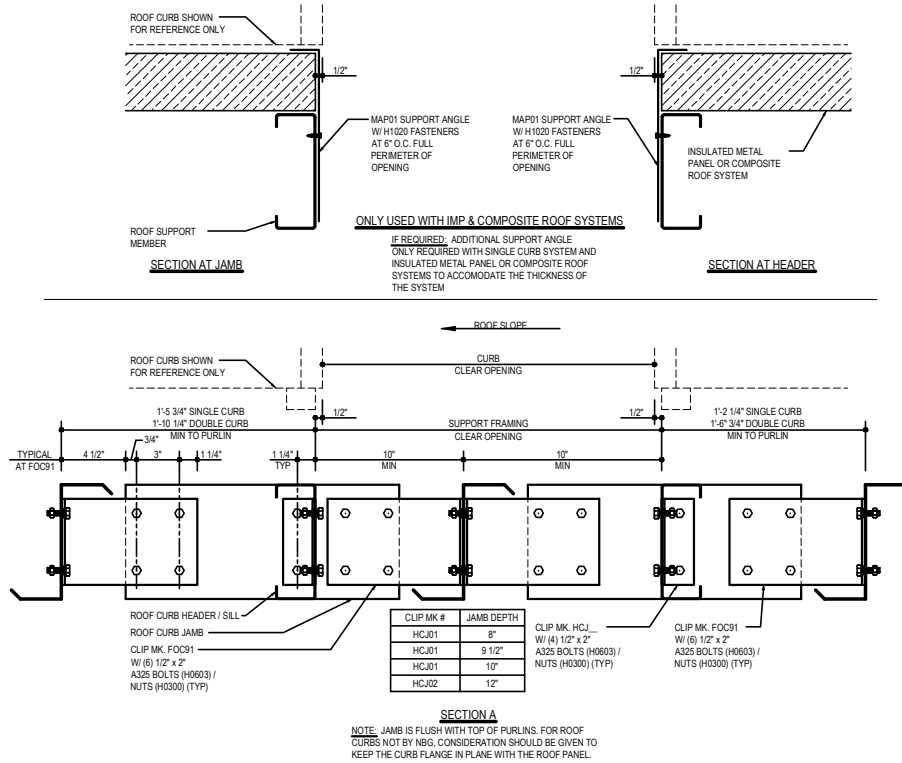


ROOF FRAMED OPENING DETAILS

- BK0100-OPTION #1 - PURLIN SUPPORT (PURLINS RUN THROUGH)
 - BK0150-OPTION #1 - PURLIN SUPPORT (PURLINS CUT)
 - BK0200-OPTION #2 - FULL BAY 'S' HEADER (PURLINS RUN THROUGH)
 - BK0250-OPTION #2 - FULL BAY 'S' HEADER (PURLINS CUT)
 - BK0300-OPTION #3 - FULL BAY HR HEADER (PURLINS RUN THROUGH)
 - BK0350-OPTION #3 - FULL BAY HR HEADER (PURLINS CUT)
 - BK0400-OPTION #4 - FULL BAY DOUBLE 'S' HEADER (PURLINS RUN THROUGH)
 - BK0450-OPTION #4 - FULL BAY DOUBLE 'S' HEADER (PURLINS CUT)
 - BK0500-OPTION #5 - FULL BAY BU-WF HEADER (PURLINS RUN THROUGH)
 - BK0550-OPTION #5 - FULL BAY BU-WF HEADER (PURLINS CUT)
 - BK0600-OPTION #6 - JOIST SUPPORT (JOISTS RUN THROUGH)
 - BK0650-OPTION #6 - JOIST SUPPORT (JOISTS CUT)
 - BK2000-LIGHTWEIGHT ROOF CURB INSTALLATION
 - BK2010-PURLIN CAVITY FRAMING - LIGHTWEIGHT CURB
-

BK0100 - OPTION #1 - PURLIN SUPPORT (PURLINS RUN THROUGH)

[Download the DWG file by clicking here.](#)

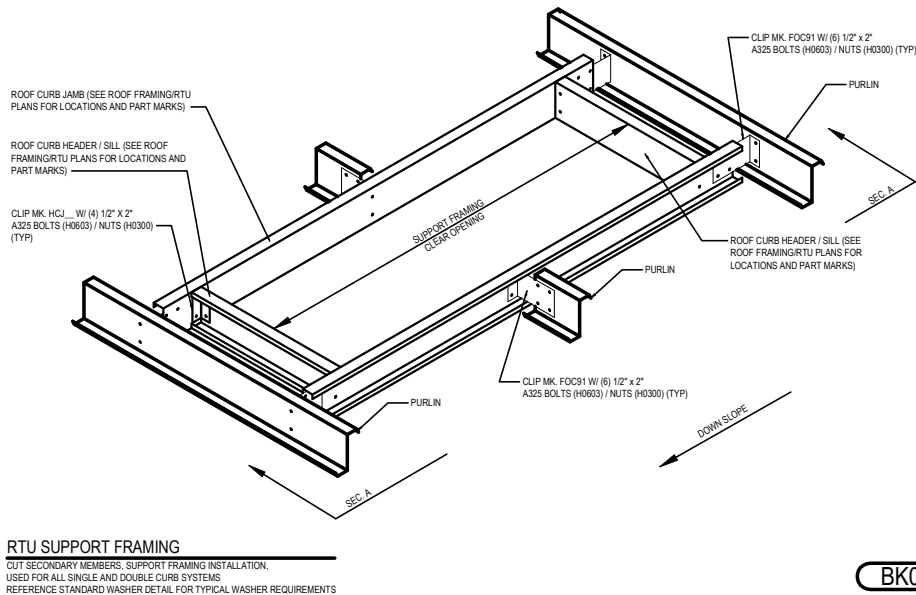
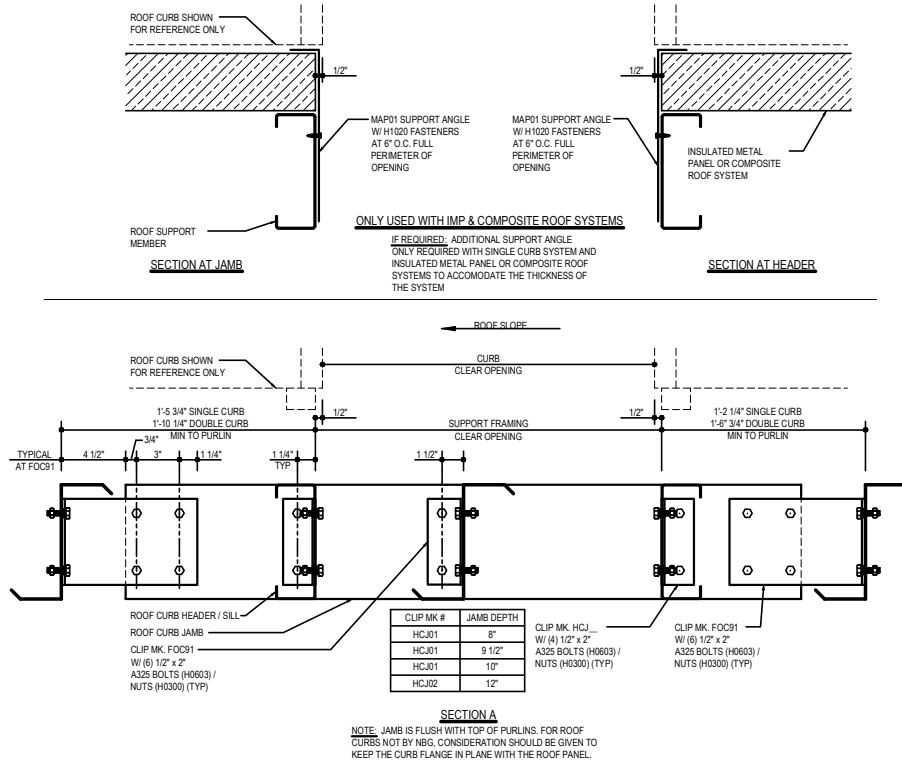


Detailer Notes:

- 1) FOR USE WITH ANY ROOF TYPE.
- 2) IMP AND COMPOSITE ROOF SYSTEMS REQUIRE THE ADDITIONAL SUPPORT ANGLES AS SHOWN.

BK0150 - OPTION #1 - PURLIN SUPPORT (PURLINS CUT)

[Download the DWG file by clicking here.](#)



RTU SUPPORT FRAMING
 OUT SECONDARY MEMBERS, SUPPORT FRAMING INSTALLATION.
 USED FOR ALL SINGLE AND DOUBLE CURB SYSTEMS
 REFERENCE STANDARD WASHER DETAIL FOR TYPICAL WASHER REQUIREMENTS

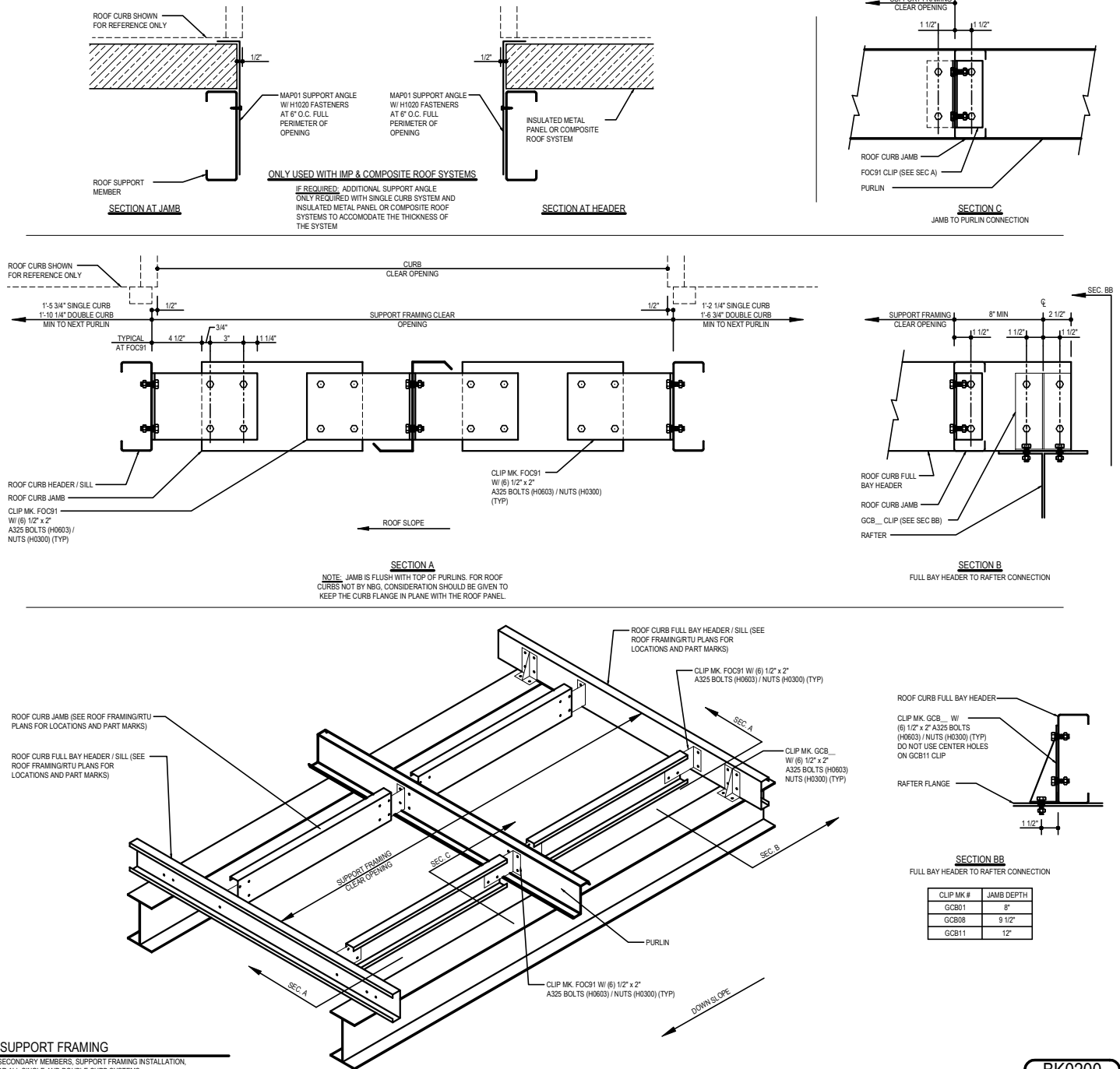
BK0150

Detailer Notes:

- 1) FOR USE WITH ANY ROOF TYPE.
- 2) IMP AND COMPOSITE ROOF SYSTEMS REQUIRE THE ADDITIONAL SUPPORT ANGLES AS SHOWN.

BK0200 - OPTION #2 - FULL BAY "S" HEADER (PURLINS RUN THROUGH)

[Download the DWG file by clicking here.](#)



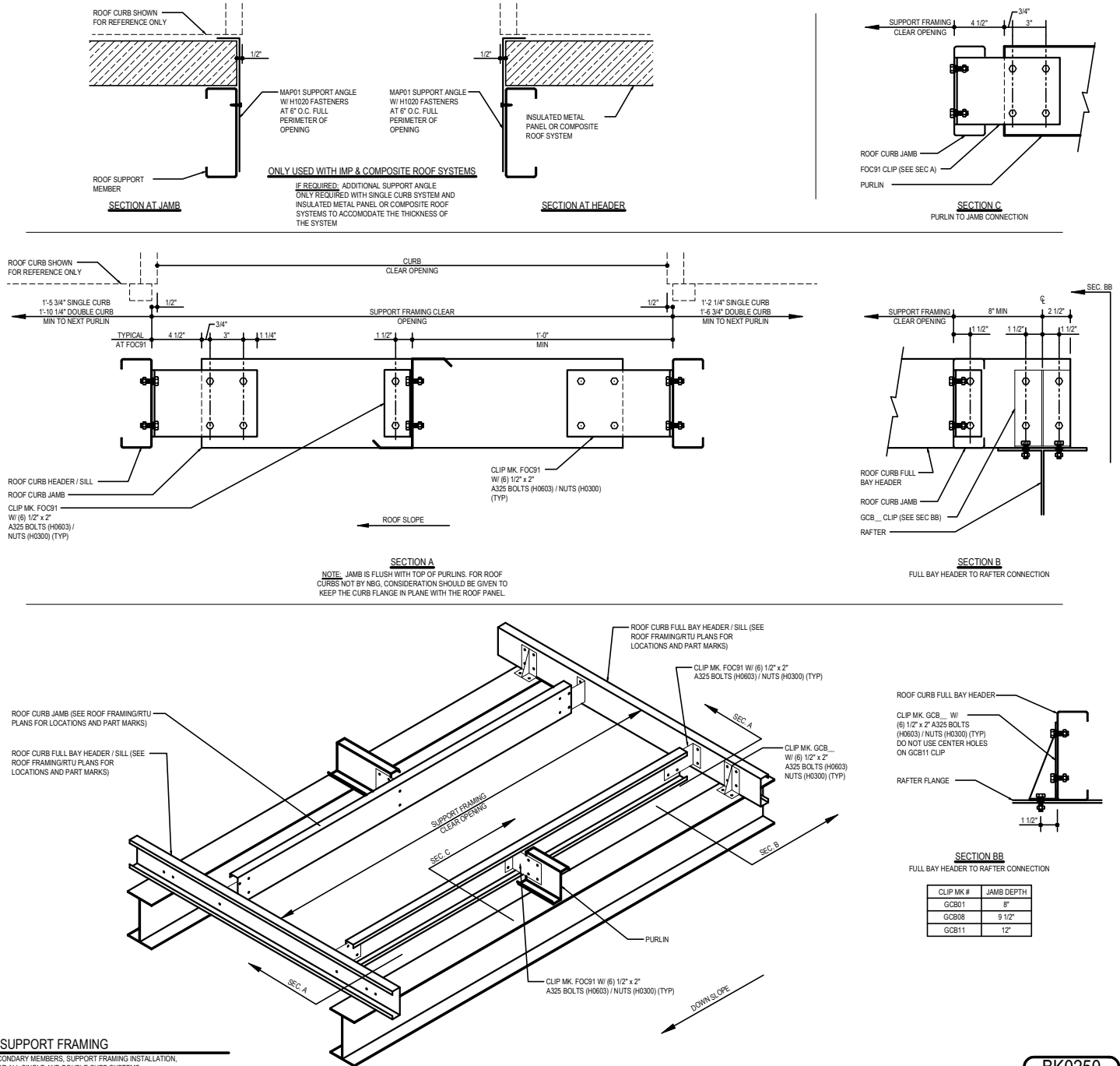
RTU SUPPORT FRAMING
UNROUT SECONDARY MEMBERS, SUPPORT FRAMING INSTALLATION,
USED FOR ALL SINGLE AND DOUBLE CURB SYSTEMS
REFERENCE STANDARD WASHER DETAIL FOR TYPICAL WASHER REQUIREMENTS

Detailer Notes:

- 1) FOR USE WITH ANY ROOF TYPE.
- 2) IMP AND COMPOSITE ROOF SYSTEMS REQUIRE THE ADDITIONAL SUPPORT ANGLES AS SHOWN.

BK0250 - OPTION #2 - FULL BAY "S" HEADER (PURLINS CUT)

[Download the DWG file by clicking here.](#)



RTU SUPPORT FRAMING

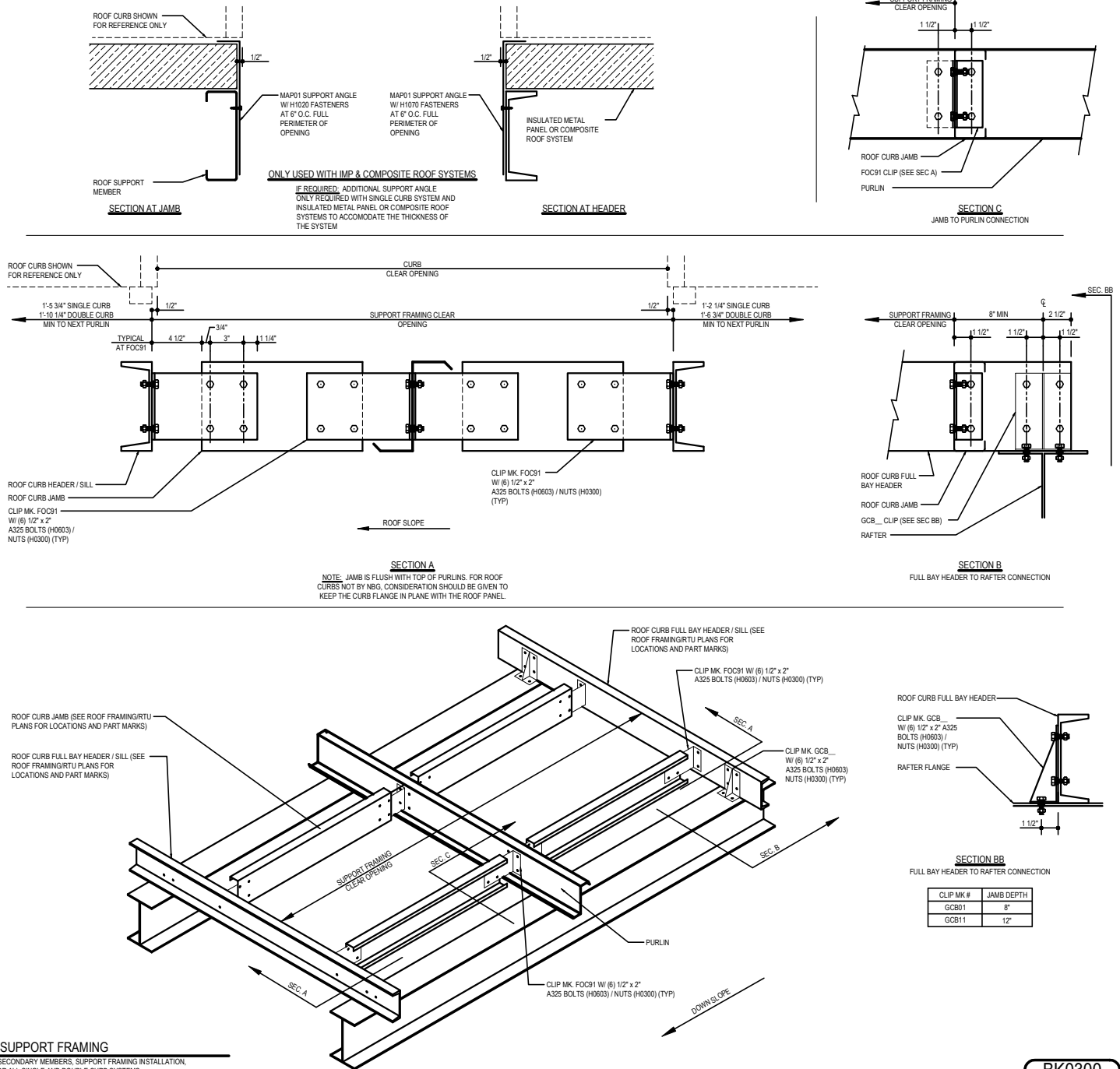
CUT SECONDARY MEMBERS, SUPPORT FRAMING INSTALLATION,
USED FOR ALL SINGLE AND DOUBLE CURB SYSTEMS
REFERENCE STANDARD WASHER DETAIL FOR TYPICAL WASHER REQUIREMENTS

Detailer Notes:

- 1) FOR USE WITH ANY ROOF TYPE.
- 2) IMP AND COMPOSITE ROOF SYSTEMS REQUIRE THE ADDITIONAL SUPPORT ANGLES AS SHOWN.

BK0300 - OPTION #3 - FULL BAY HR HEADER (PURLINS RUN THROUGH)

[Download the DWG file by clicking here.](#)



RTU SUPPORT FRAMING

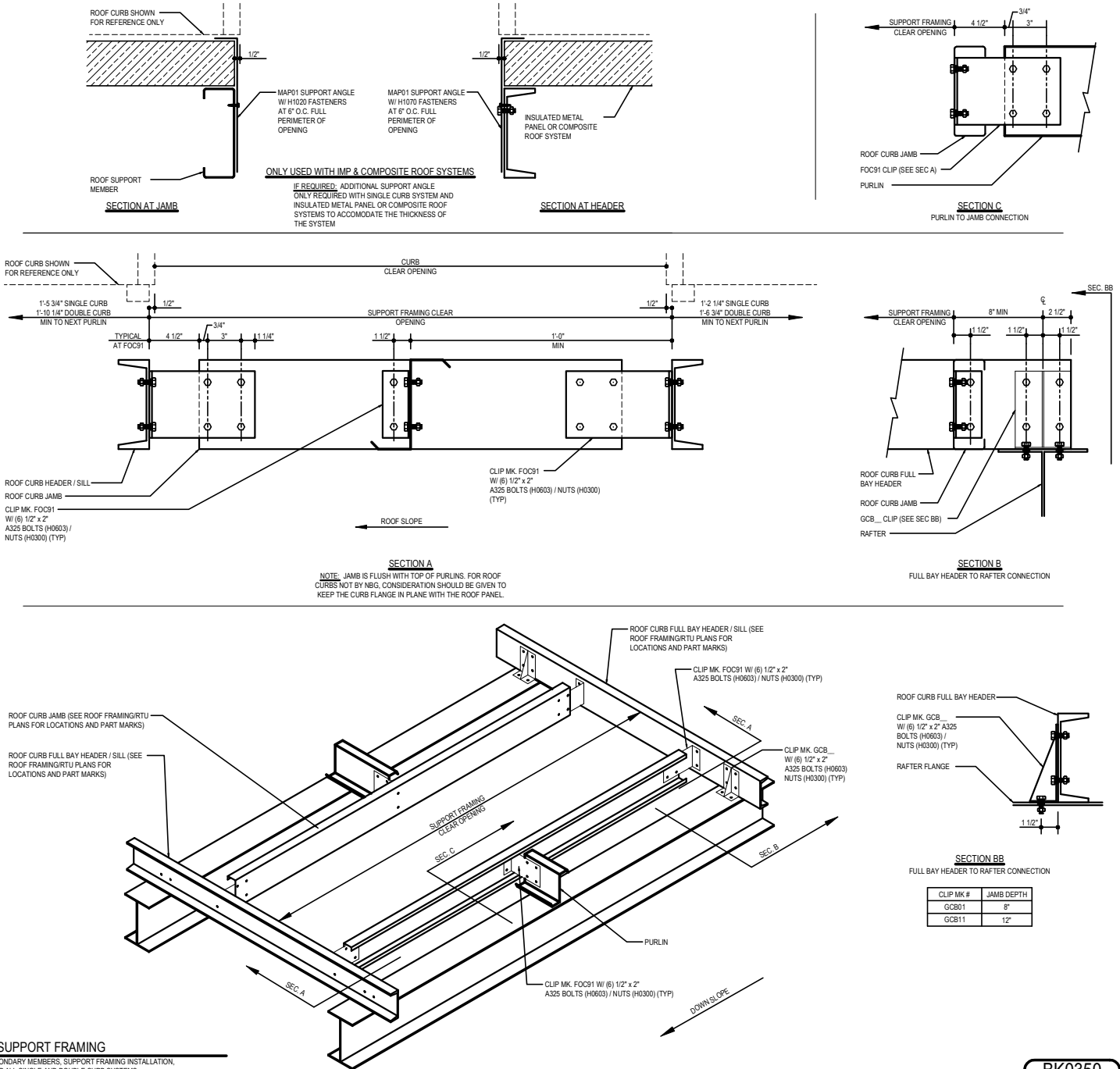
UNCUT SECONDARY MEMBERS, SUPPORT FRAMING INSTALLATION,
USED FOR ALL SINGLE AND DOUBLE CURB SYSTEMS
REFERENCE STANDARD WASHER DETAIL FOR TYPICAL WASHER REQUIREMENTS

Detailer Notes:

- 1) FOR USE WITH ANY ROOF TYPE.
- 2) IMP AND COMPOSITE ROOF SYSTEMS REQUIRE THE ADDITIONAL SUPPORT ANGLES AS SHOWN.
- 3) DETAIL DOES NOT WORK WITH 9 1/2" PURLINS. USE DOUBLE "S" FULL BAY HEADER (BK0400)

BK0350 - OPTION #3 - FULL BAY HR HEADER (PURLINS CUT)

[Download the DWG file by clicking here.](#)

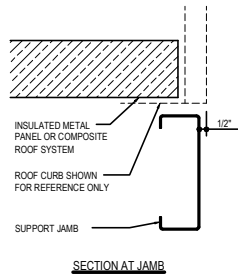


Detailer Notes:

- 1) FOR USE WITH ANY ROOF TYPE.
- 2) IMP AND COMPOSITE ROOF SYSTEMS REQUIRE THE ADDITIONAL SUPPORT ANGLES AS SHOWN.
- 3) DETAIL DOES NOT WORK WITH 9 1/2" PURLINS. USE DOUBLE "S" FULL BAY HEADER (BK0450)

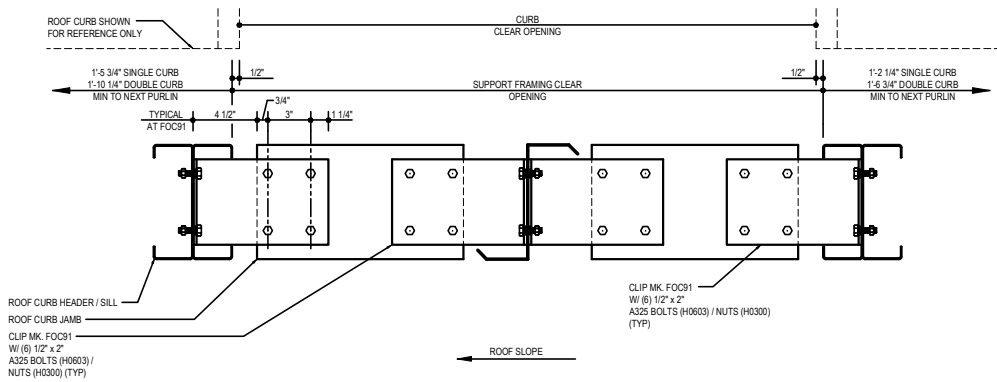
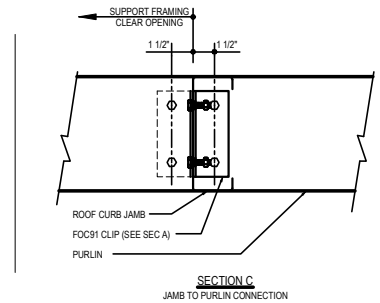
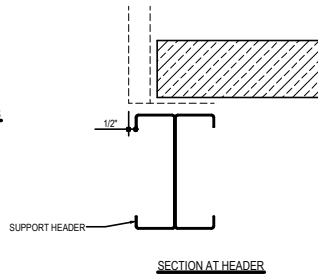
BK0400 - OPTION #4 - FULL BAY DOUBLE "S" HEADER (PURLINS RUN THROUGH)

[Download the DWG file by clicking here.](#)

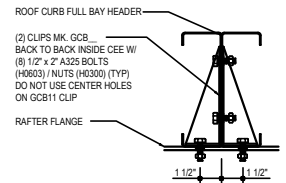
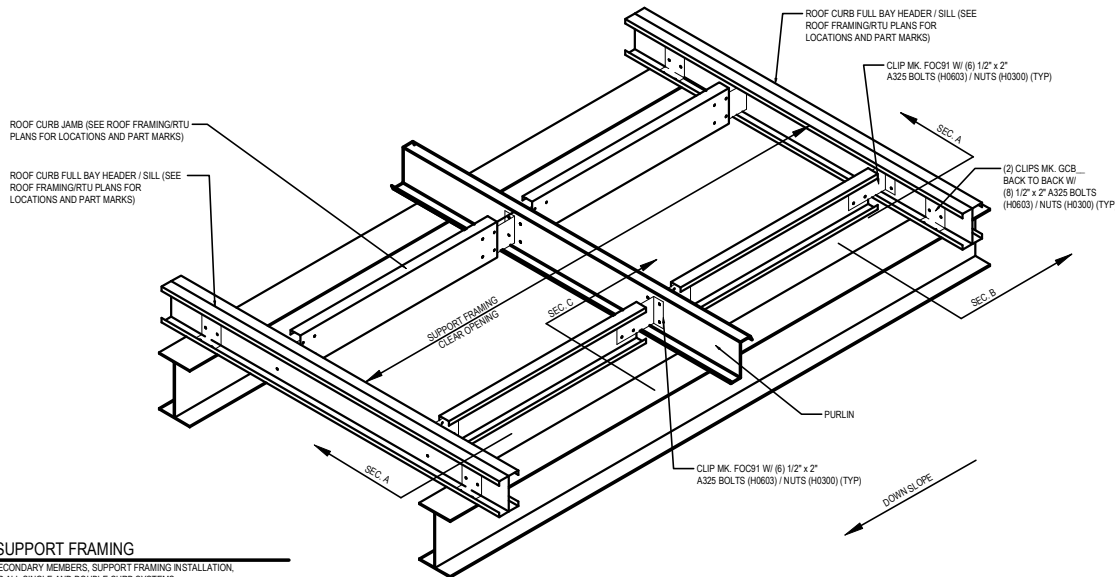
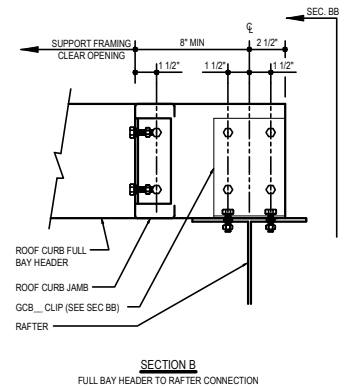


ONLY USED WITH IMP & COMPOSITE ROOF SYSTEMS

STRUCTURAL CURB MUST BE INSTALLED PRIOR TO ROOF SYSTEM AS CURB FLANGE IS UNDER THE ROOF SYSTEM AS SHOWN.



NOTE: JAMB IS FLUSH WITH TOP OF PURLINS. FOR ROOF CURBS NOT BY NBG, CONSIDERATION SHOULD BE GIVEN TO KEEP THE CURB FLANGE IN PLANE WITH THE ROOF PANEL.



SECTION BB
FULL BAY HEADER TO RAFTER CONNECTION

CLIP MK #	JAMB DEPTH
GCB01	8"
GCB08	9 1/2"
GCB11	12"

RTU SUPPORT FRAMING

UNCLUT SECONDARY MEMBERS, SUPPORT FRAMING INSTALLATION, USED FOR ALL SINGLE AND DOUBLE CURB SYSTEMS, REFERENCE STANDARD WASHER DETAIL FOR TYPICAL WASHER REQUIREMENTS

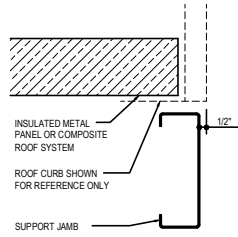
Detailer Notes:

- 1) FOR USE WITH ANY ROOF TYPE.
- 2) THIS SYSTEM IS DESIGNED TO WORK WITH DOUBLE ROOF CURB SYSTEMS.

BK0400

BK0450 - OPTION #4 - FULL BAY DOUBLE "S" HEADER (PURLINS CUT)

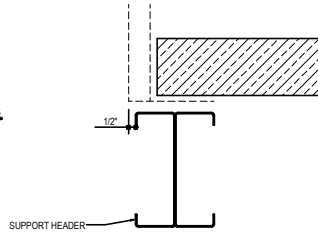
[Download the DWG file by clicking here.](#)



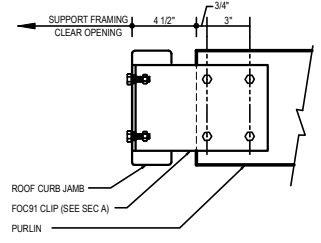
SECTION AT JAMB

ONLY USED WITH IMP & COMPOSITE ROOF SYSTEMS

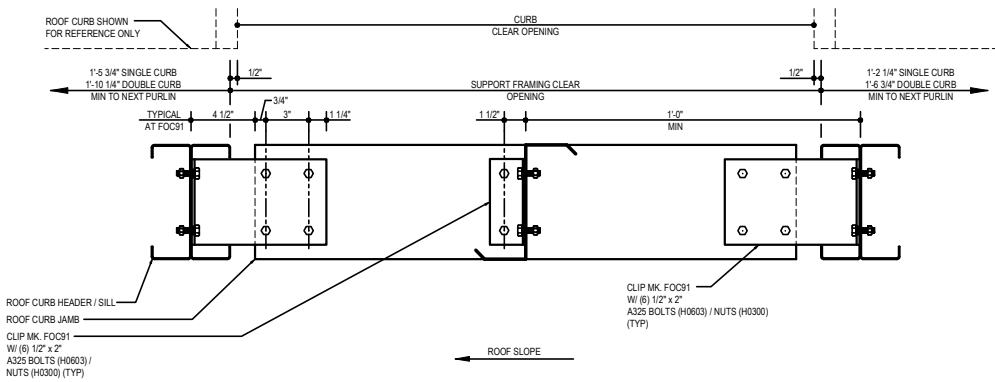
STRUCTURAL CURB MUST BE INSTALLED PRIOR TO ROOF SYSTEM AS CURB FLANGE IS UNDER THE ROOF SYSTEM AS SHOWN.



SECTION AT HEADER

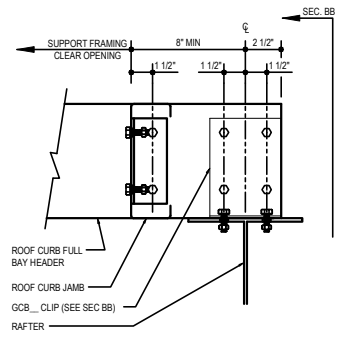


**SECTION C
PURLIN TO JAMB CONNECTION**



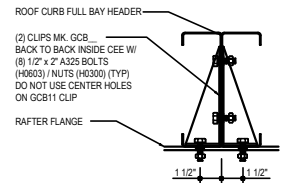
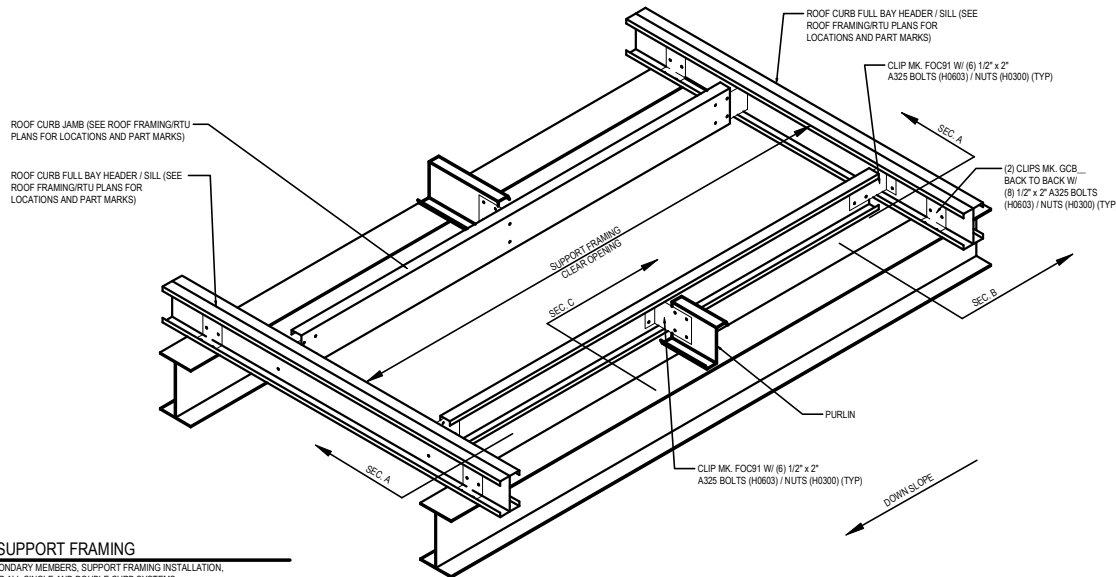
SECTION A

NOTE: JAMB IS FLUSH WITH TOP OF PURLINS. FOR ROOF CURBS NOT BY NRG, CONSIDERATION SHOULD BE GIVEN TO KEEP THE CURB FLANGE IN PLANE WITH THE ROOF PANEL.



SECTION B

FULL BAY HEADER TO RAFTER CONNECTION



SECTION BB
FULL BAY HEADER TO RAFTER CONNECTION

CLIP MK #	JAMB DEPTH
GCB01	8"
GCB08	9 1/2"
GCB11	12"

RTU SUPPORT FRAMING

CUT SECONDARY MEMBERS, SUPPORT FRAMING INSTALLATION,
USED FOR ALL SINGLE AND DOUBLE CURB SYSTEMS
REFERENCE STANDARD WASHER DETAIL FOR TYPICAL WASHER REQUIREMENTS

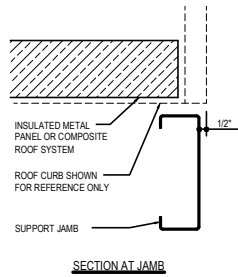
Detailer Notes:

- 1) FOR USE WITH ANY ROOF TYPE.
- 2) THIS SYSTEM IS DESIGNED TO WORK WITH DOUBLE ROOF CURB SYSTEMS.

BK0450

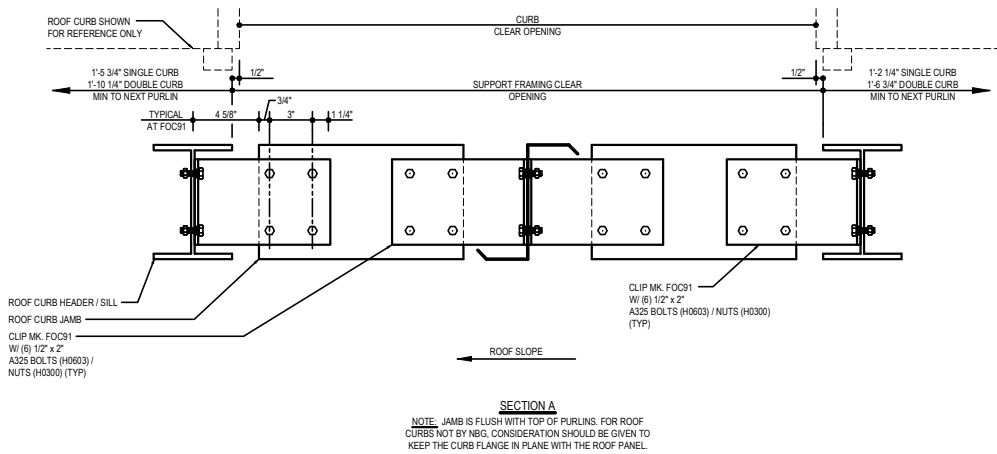
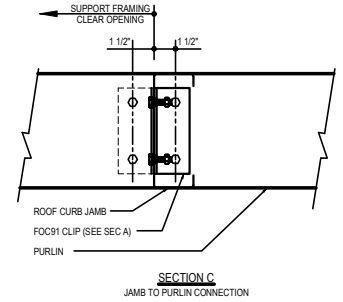
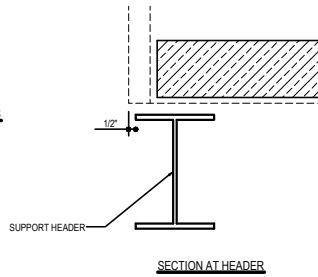
BK0500 - OPTION #5 - FULL BAY BU-WF HEADER (PURLINS RUN THROUGH)

[Download the DWG file by clicking here.](#)

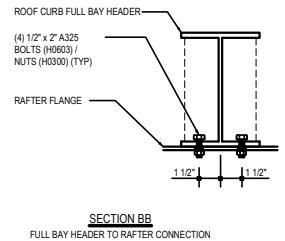
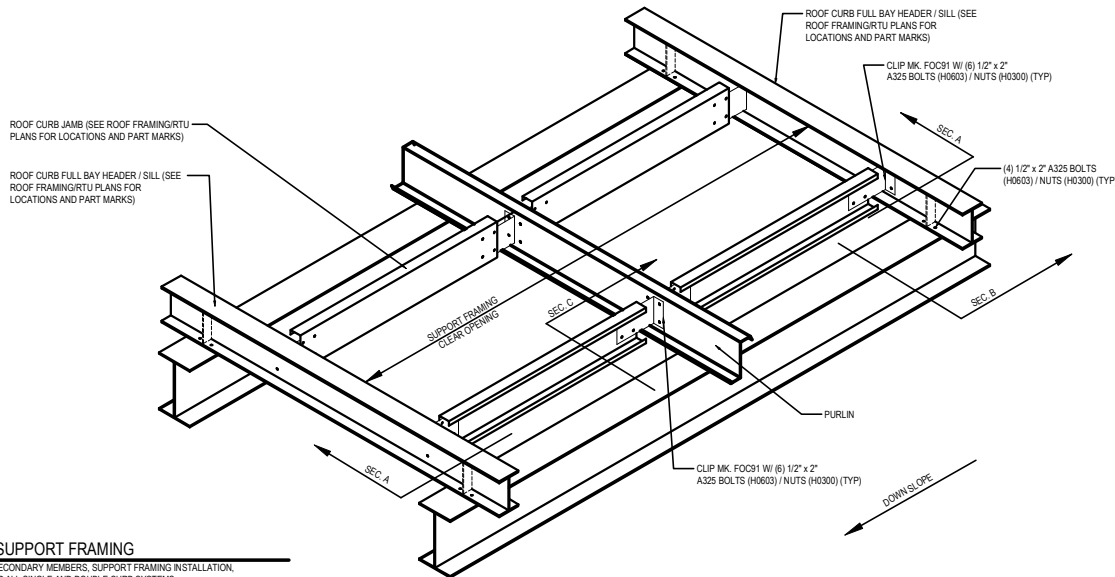
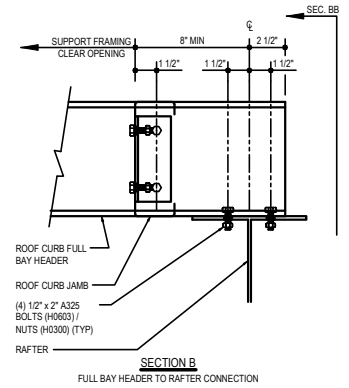


ONLY USED WITH IMP & COMPOSITE ROOF SYSTEMS

STRUCTURAL CURB MUST BE INSTALLED PRIOR TO ROOF SYSTEM AS CURB FLANGE IS UNDER THE ROOF SYSTEM AS SHOWN.



NOTE: JAMB IS FLUSH WITH TOP OF PURLINS. FOR ROOF CURBS NOT BY NBG, CONSIDERATION SHOULD BE GIVEN TO KEEP THE CURB FLANGE IN PLANE WITH THE ROOF PANEL.



RTU SUPPORT FRAMING
UNROUT SECONDARY MEMBERS, SUPPORT FRAMING INSTALLATION,
USED FOR ALL SINGLE AND DOUBLE CURB SYSTEMS
REFERENCE STANDARD WASHER DETAIL FOR TYPICAL WASHER REQUIREMENTS

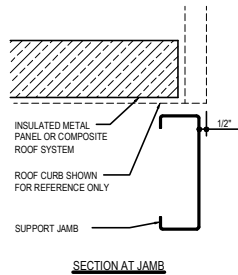
Detailer Notes:

- 1) FOR USE WITH ANY ROOF TYPE.
- 2) THIS SYSTEM IS DESIGNED TO WORK WITH DOUBLE ROOF CURB SYSTEMS.
- 3) THERE ARE NO WF MEMBERS AVAILABLE FOR 9 1/2" SECONDARY FRAMING.

BK0500

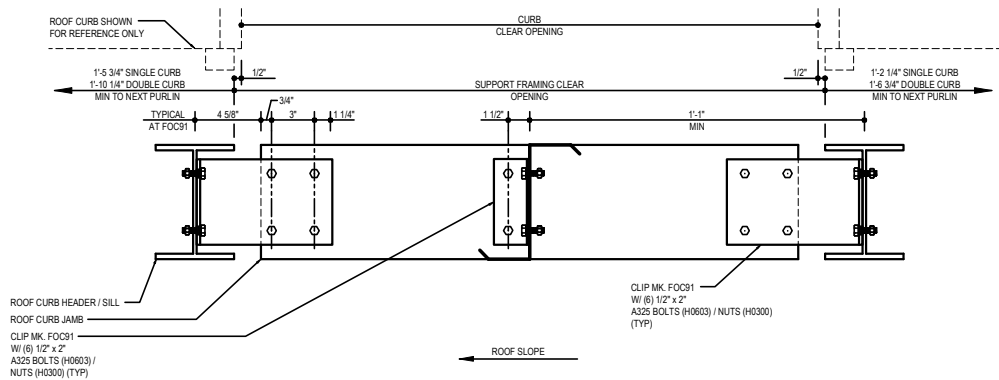
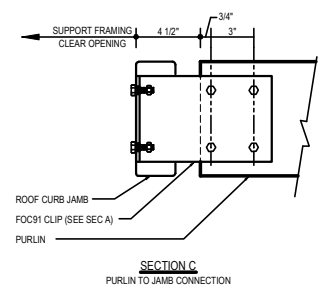
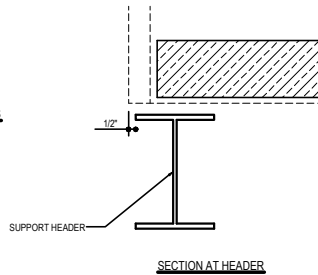
BK0550 - OPTION #5 - FULL BAY BU-WF HEADER (PURLINS CUT)

[Download the DWG file by clicking here.](#)

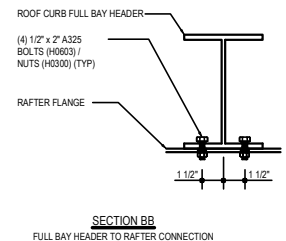
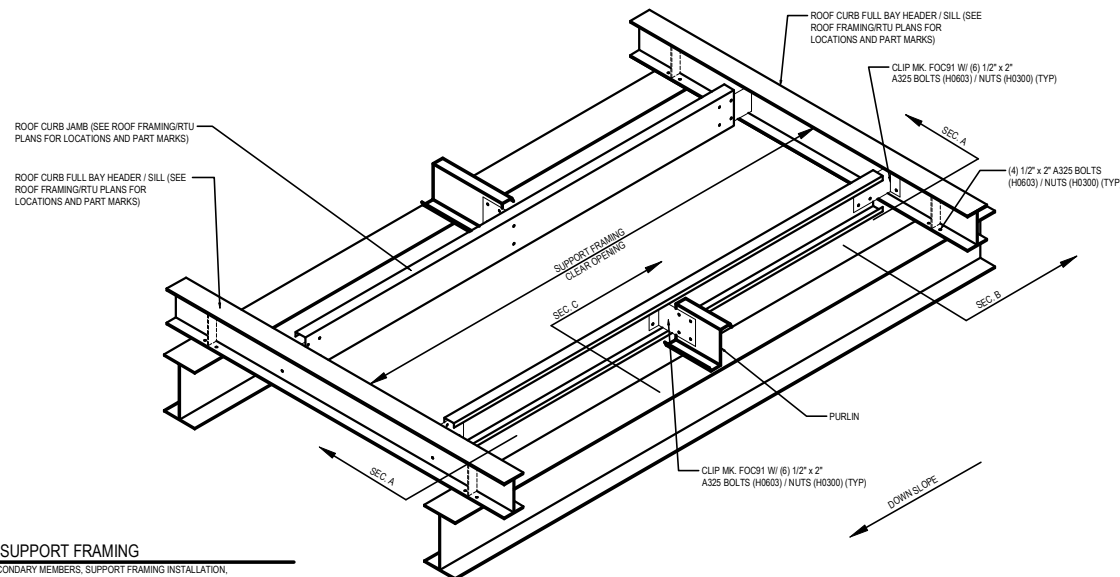
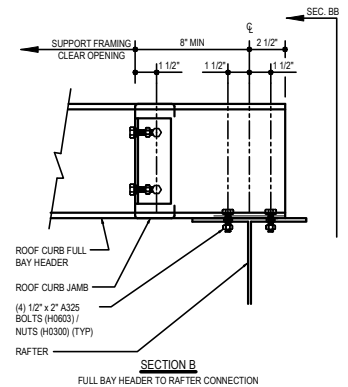


ONLY USED WITH IMP & COMPOSITE ROOF SYSTEMS

STRUCTURAL CURB MUST BE INSTALLED PRIOR TO ROOF SYSTEM AS CURB FLANGE IS UNDER THE ROOF SYSTEM AS SHOWN.



NOTE: JAMB IS FLUSH WITH TOP OF PURLINS. FOR ROOF CURBS NOT BY NFG, CONSIDERATION SHOULD BE GIVEN TO KEEP THE CURB FLANGE IN PLANE WITH THE ROOF PANEL.



RTU SUPPORT FRAMING

CUT SECONDARY MEMBERS, SUPPORT FRAMING INSTALLATION,
USED FOR ALL SINGLE AND DOUBLE CURB SYSTEMS
REFERENCE STANDARD WASHER DETAIL FOR TYPICAL WASHER REQUIREMENTS

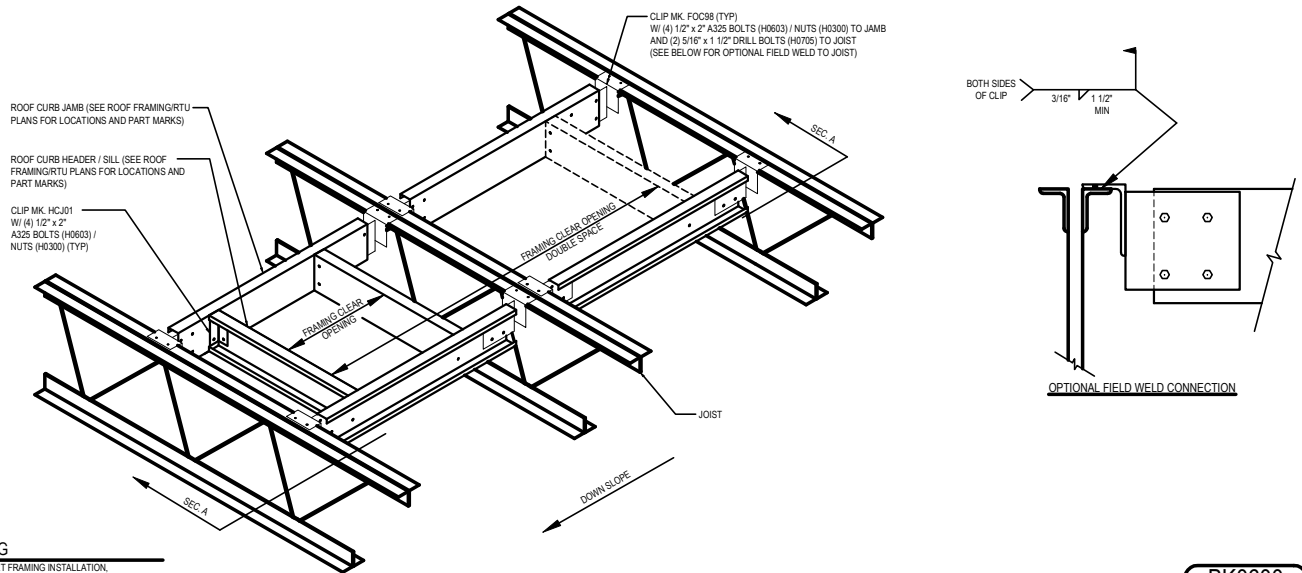
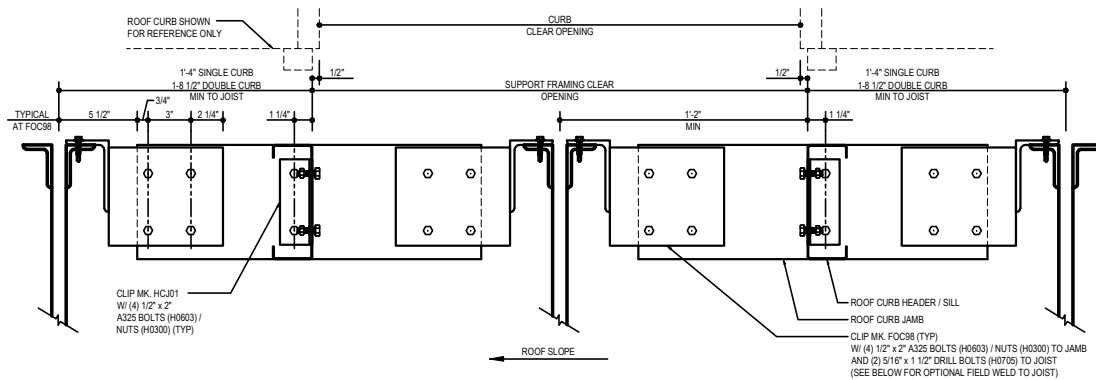
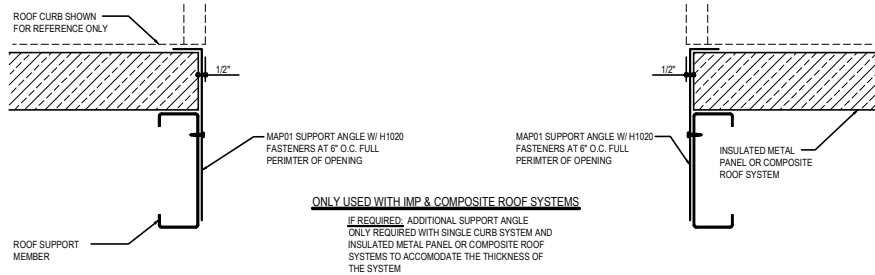
Detailer Notes:

- 1) FOR USE WITH ANY ROOF TYPE.
- 2) THIS SYSTEM IS DESIGNED TO WORK WITH DOUBLE ROOF CURB SYSTEMS.
- 3) THERE ARE NO WF MEMBERS AVAILABLE FOR 9 1/2" SECONDARY FRAMING.

BK0550

BK0600 - OPTION #6 - JOIST SUPPORT (JOISTS RUN THROUGH)

[Download the DWG file by clicking here.](#)



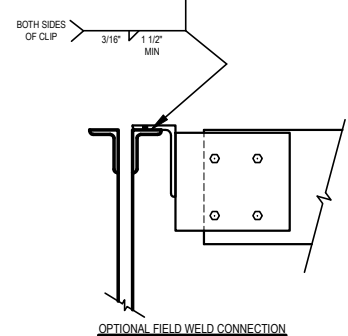
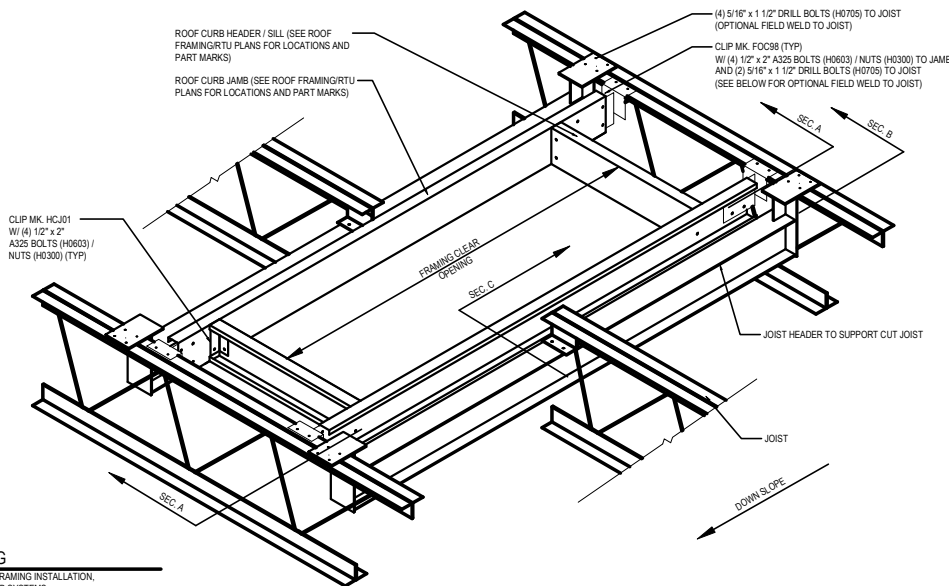
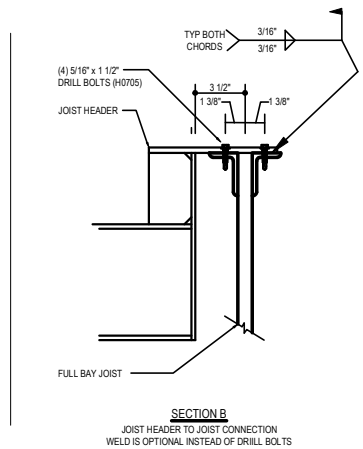
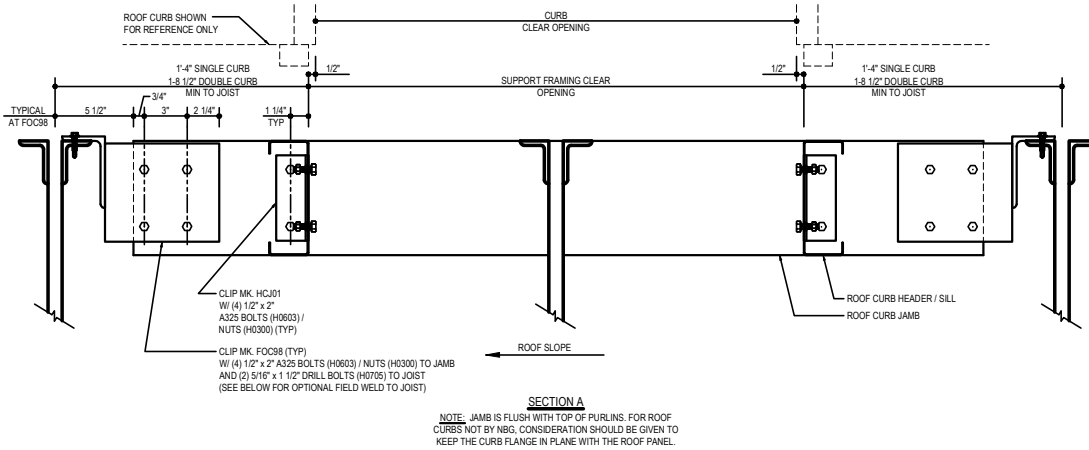
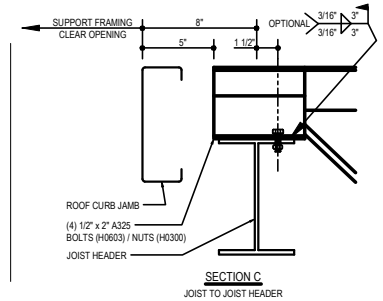
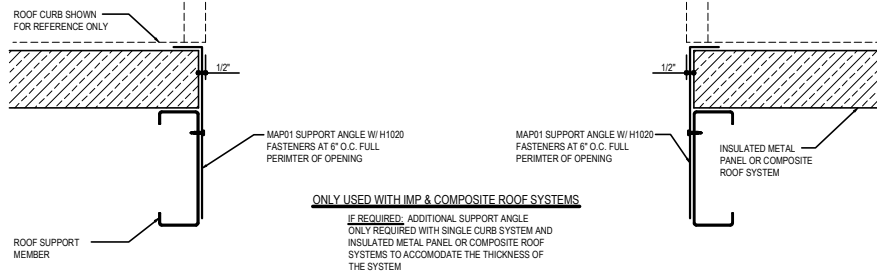
Detailer Notes:

- 1) FOR USE WITH ANY ROOF TYPE.
- 2) IMP AND COMPOSITE ROOF SYSTEMS REQUIRE THE ADDITIONAL SUPPORT ANGLES AS SHOWN.

BK0600

BK0650 - OPTION #6 - JOIST SUPPORT (JOISTS CUT)

Download the DWG file by clicking [here](#).



RTU SUPPORT FRAMING

CUT SECONDARY MEMBERS, SUPPORT FRAMING INSTALLATION, USED FOR ALL SINGLE AND DOUBLE CURB SYSTEMS. REFERENCE STANDARD WASHER DETAIL FOR TYPICAL WASHER REQUIREMENTS

Detailer Notes:

- 1) FOR USE WITH ANY ROOF TYPE.
- 2) IMP AND COMPOSITE ROOF SYSTEMS REQUIRE THE ADDITIONAL SUPPORT ANGLES AS SHOWN.

BK0650

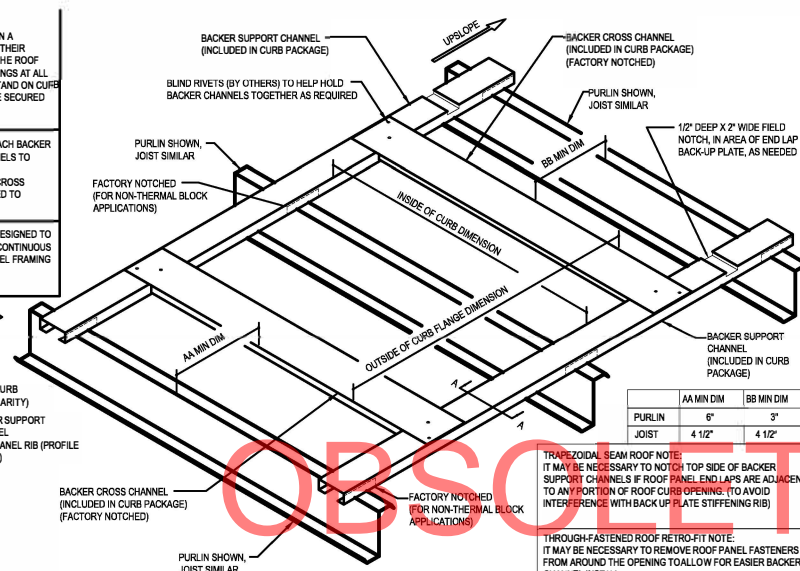
BK2000 - LIGHTWEIGHT ROOF CURB INSTALLATION

Download the DWG file by clicking here.

SAFETY PRECAUTION:
WORKERS SHOULD MAINTAIN A CONSTANT AWARENESS OF THEIR LOCATION IN RELATION TO THE ROOF EDGE AND ANY ROOF OPENINGS AT ALL TIMES. DO NOT WALK OR STAND ON CURB FRAMING UNTIL PANELS ARE SECURED PROPERLY.

- DO NOT FASTEN OR ATTACH BACKER SUPPORT/CROSS CHANNELS TO SECONDARY.
- BACKER SUPPORT AND CROSS CHANNELS ARE DESIGNED TO "FLOAT".

ROOF SECONDARY IS NOT DESIGNED TO BE CUT AND MUST REMAIN CONTINUOUS BELOW THE BACKER CHANNEL FRAMING AS SHOWN.



TRAPEZOIDAL SEAM ROOF NOTE:
IT MAY BE NECESSARY TO NOTCH TOP SIDE OF BACKER SUPPORT CHANNELS IF ROOF PANEL END LAPS ARE ADJACENT TO AN 'FOOTING' OF ROOF CURB OPENING, TO AVOID INTERFERENCE WITH BACK UP PLATE STIFFENING RIB)

THROUGH FASTENED ROOF RETRO-FIT NOTE:
IT MAY BE NECESSARY TO REMOVE ROOF PANEL FASTENERS FROM AROUND THE OPENING TO ALLOW FOR EASIER BACKER CHANNEL INSTALL.

	AA MIN DIM	BB MIN DIM
PURLIN	6"	3"
JOIST	4 1/2"	4 1/2"

INSTALLATION PROCEDURE (RETRO-FIT):

- DETERMINE ROOF CURB LOCATIONS. IF POSSIBLE, TRY TO CENTER OPENING CURB OVER A MAJOR RIB/SEAM. KEEP OPENING MINIMUM 2" FROM EDGE OF RIB. SEE SECTION A-A.
- FOLLOW ROOF PANEL CUT-OUT PROCEDURES (AT RIGHT) FOR PROPERLY CUTTING OPENING IN ROOF PANEL.
- INSTALL BACKER SUPPORT CHANNELS (SIDES), USING CAUTION NOT TO TEAR/CUT ROOF INSULATION WHEN PLACING WITHIN OPENING.
- CENTER BACKER FRAMING OVER SECONDARY MAKING SURE THE ENDS OF THE BACKER SUPPORT CHANNELS REST ON SECONDARY EQUALLY. (IF A NON-THERMAL BLOCK ROOF APPLICATION, THE BACKER SUPPORT CHANNELS WILL COME FACTORY NOTCHED AT SECONDARY).
- INSTALL BACKER CROSS CHANNELS (UPSLOPE/DOWNSLOPE), WITH FACTORY NOTCHED ENDS, ON TOP OF BACKER SUPPORT CHANNELS AND UNDER ROOF PANEL.
- FOLLOW INSULATION TIE-OFF PROCEDURE (FROM BELOW) FOR PROPERLY REMOVING INSULATION FROM ROOF OPENING.

INSTALLATION PROCEDURE (NEW CONSTRUCTION):

- DETERMINE ROOF CURB LOCATIONS. IF POSSIBLE, TRY TO CENTER OPENING CURB OVER A MAJOR RIB/SEAM. KEEP OPENING MINIMUM 2" FROM EDGE OF RIB. SEE SECTION A-A.
- ASSEMBLE BACKER SUPPORT/CROSS CHANNELS. PLACE (2) POP RIVETS IN EACH CORNER TO HELP HOLD BACKER CHANNELS TOGETHER, AS REQUIRED.
- LAY BACKER FRAMING ON TOP OF INSULATION. (IF NO INSULATION IS UTILIZED THEN LAY DIRECTLY ON TOP OF SECONDARY).
- CENTER BACKER FRAMING OVER SECONDARY MAKING SURE THE ENDS OF BACKER SUPPORT CHANNELS REST ON THE SECONDARY EQUALLY. (IF A NON-THERMAL BLOCK ROOF APPLICATION, THE BACKER SUPPORT CHANNELS WILL COME FACTORY NOTCHED AT SECONDARY).
- START SHEETING OVER BACKER FRAMING. ATTACH ROOF PANELS PER STANDARD PRACTICE.
- PLACE A FASTENER AT LOWER AND UPPER CORNER OF SUPPORT FRAMING.
(SEE ROOF PANEL CUT-OUT PROCEDURE (AT RIGHT) FOR THIS INSTALLATION. CONTINUE SHEETING ROOF PANELS AND PLACE A FASTENER AT OTHER LOWER AND UPPER CORNERS OF SUPPORT FRAMING.)
- FOLLOW INSULATION TIE-OFF PROCEDURE (FROM BELOW) FOR PROPERLY REMOVING INSULATION FROM ROOF OPENING.

ROOF PANEL CUT-OUT PROCEDURE:

WHEN FIELD CUTTING PANELS DO NOT USE ABRASIVE SAWS OR OTHER CUTTING METHODS WHICH PRODUCE HOT METAL PARTICLES AND/OR BURN THE CUT EDGES. THESE METHODS WILL DAMAGE THE PAINTED AND ALUMINUM COATED FINISH AND VOID ANY WARRANTIES. USE DOUBLE CUT SHEARS, NIBBLERS OR OTHER CUTTING DEVICES WHICH DO NOT PRODUCE HOT METAL PARTICLES OR BURNED EDGES.

- FOR RETRO-FIT INSTALL, THE ROOF OPENING WIDTH DIMENSION WILL BE THE OUTSIDE OF CURB FLANGE DIMENSION MINUS (1) 6". THE ROOF OPENING LENGTH DIMENSION WILL BE THE INSIDE OF CURB DIMENSION. OTHER DIMENSIONS ARE LAID OUT AND CONFIRMED. DRILL A HOLE IN PANEL AT EACH CORNER AND CUT AWAY ROOF PANELS. USING CAUTION NOT TO CUT INTO ROOF INSULATION (IF UTILIZED).
- FOR NEW CONSTRUCTION, PLACE A FASTENER AT EACH CORNER OF THE SUPPORT FRAMING AS SHOWN IN DETAIL "A" (THIS IS TEMPORARY AND WILL HELP ENSURE THE SUPPORT FRAMING DOES NOT MOVE DURING PANEL INSTALLATION). LOCATE CORNER FASTENERS UNDER ROOF PANELS, DRILL A HOLE IN ROOF PANEL AT EACH FASTENER LOCATION AND CUT AWAY ROOF PANELS, USING CAUTION NOT TO CUT INTO ROOF INSULATION (IF UTILIZED).
- DEBURR ALL FIELD CUT PANEL CORRUGATIONS AND PANEL EDGES OF SHARP EDGES BEFORE PROCEEDING.

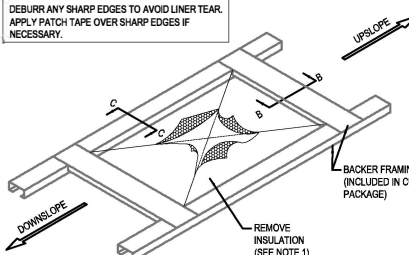
INSULATION TIE-OFF PROCEDURE AT BLANKET INSULATION:
USE WITH PURLINS OR JOIST AS ROOF SECONDARY MEMBER TYPES.

- REMOVE INSULATION BACKING FROM THE LINER WITHIN THE ROOF OPENING AREA. CUT LINER INSIDE OF THE ROOF OPENING AREA.
- TUCK LINER UNDER ROOF PANEL AND ON TOP OF BACKER CHANNELS (SIDES).
- FLUSH LINER OVER UPHILL/DOWNHILL BACKER CHANNELS AND TAPE LINER TO BACKER CHANNELS.
- OPTIONAL TIE-OFF PROCEDURE: INSTALL ROOF CURB (WITH PROPER SEALANTS UNDER CURB FLANGES), SECURE ROOF CURB, WRAP LINER UP AND OVER INNER CURB FLANGE PERIMETER, SECURE LINER WITH TAPE OR FASTENERS WITH OVERSIZED WASHERS (TAPE, FASTENERS NOR WASHERS NOT BY METAL BUILDING SUPPLIER).

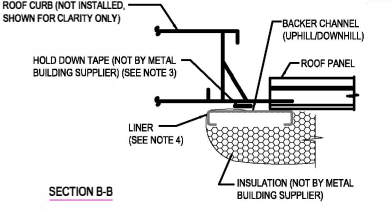
INSULATION TIE-OFF PROCEDURE AT PURLIN CAVITY FRAMING:
USE WITH CAVITY FILLED INSULATION (BASKET) SYSTEMS AND/OR WITH METAL ROOF LINER IF ORDERED.

- REMOVE ADDITIONAL INSULATION FROM WITHIN THE ROOF OPENING AREA TO BE ABLE TO INSTALL PURLIN CAVITY FRAMING, BUT NOT SO MUCH AS TO CREATE VOIDS. INSULATION NEEDS TO BE SNUG AROUND PURLIN CAVITY FRAMING.
- INSTALL PURLIN CAVITY FRAMING PARTS WITH MULTI-USE SEALANT TAPE APPLIED ON TOP SIDE FLANGE, TO CREATE SEAL BETWEEN BACKER CHANNELS AND PURLIN CAVITY FRAMING.
- FILL INSULATION VOIDS WITH ADEQUATE INSULATION, AS REQUIRED.
- SECURE INSULATION WITH METAL LINER WITH TAPE OR FASTENERS WITH OVERSIZED WASHERS TO BOTTOM SIDE FLANGE OF PURLIN CAVITY FRAMING (TAPE, FASTENERS NOR OVERSIZED WASHERS BY METAL BUILDING SUPPLIER).

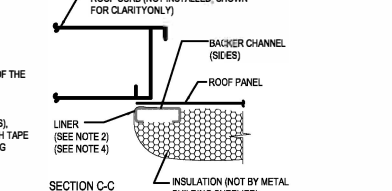
DEBURR ANY SHARP EDGES TO AVOID LINER TEAR. APPLY PATCH TAPE OVER SHARP EDGES IF NECESSARY.



SECTION A-A



SECTION B-B



SECTION C-C

INSULATION TIE-OFF PROCEDURE AT PURLIN CAVITY FRAMING:
USE WITH CAVITY FILLED INSULATION (BASKET) SYSTEMS AND/OR WITH METAL ROOF LINER IF ORDERED.

- REMOVE ADDITIONAL INSULATION FROM WITHIN THE ROOF OPENING AREA TO BE ABLE TO INSTALL PURLIN CAVITY FRAMING, BUT NOT SO MUCH AS TO CREATE VOIDS. INSULATION NEEDS TO BE SNUG AROUND PURLIN CAVITY FRAMING.
- INSTALL PURLIN CAVITY FRAMING PARTS WITH MULTI-USE SEALANT TAPE APPLIED ON TOP SIDE FLANGE, TO CREATE SEAL BETWEEN BACKER CHANNELS AND PURLIN CAVITY FRAMING.
- FILL INSULATION VOIDS WITH ADEQUATE INSULATION, AS REQUIRED.
- SECURE INSULATION WITH METAL LINER WITH TAPE OR FASTENERS WITH OVERSIZED WASHERS TO BOTTOM SIDE FLANGE OF PURLIN CAVITY FRAMING (TAPE, FASTENERS NOR OVERSIZED WASHERS BY METAL BUILDING SUPPLIER).

SECTION B-B IF ORDERED AND SUPPLIED ONLY **SECTION C-C**

LIGHTWEIGHT ROOF CURB INSTALLATION
UNCLIP SECONDARY MEMBERS, SUPPORT FRAMING INSTALLATION, PREPPING ROOF OPENING FOR ALL STANDARD ROOF PANEL TYPES, FOR USE WITH CURB MOUNT PRISMATIC DOMES & PRISMATIC SMOKE VENTS ONLY

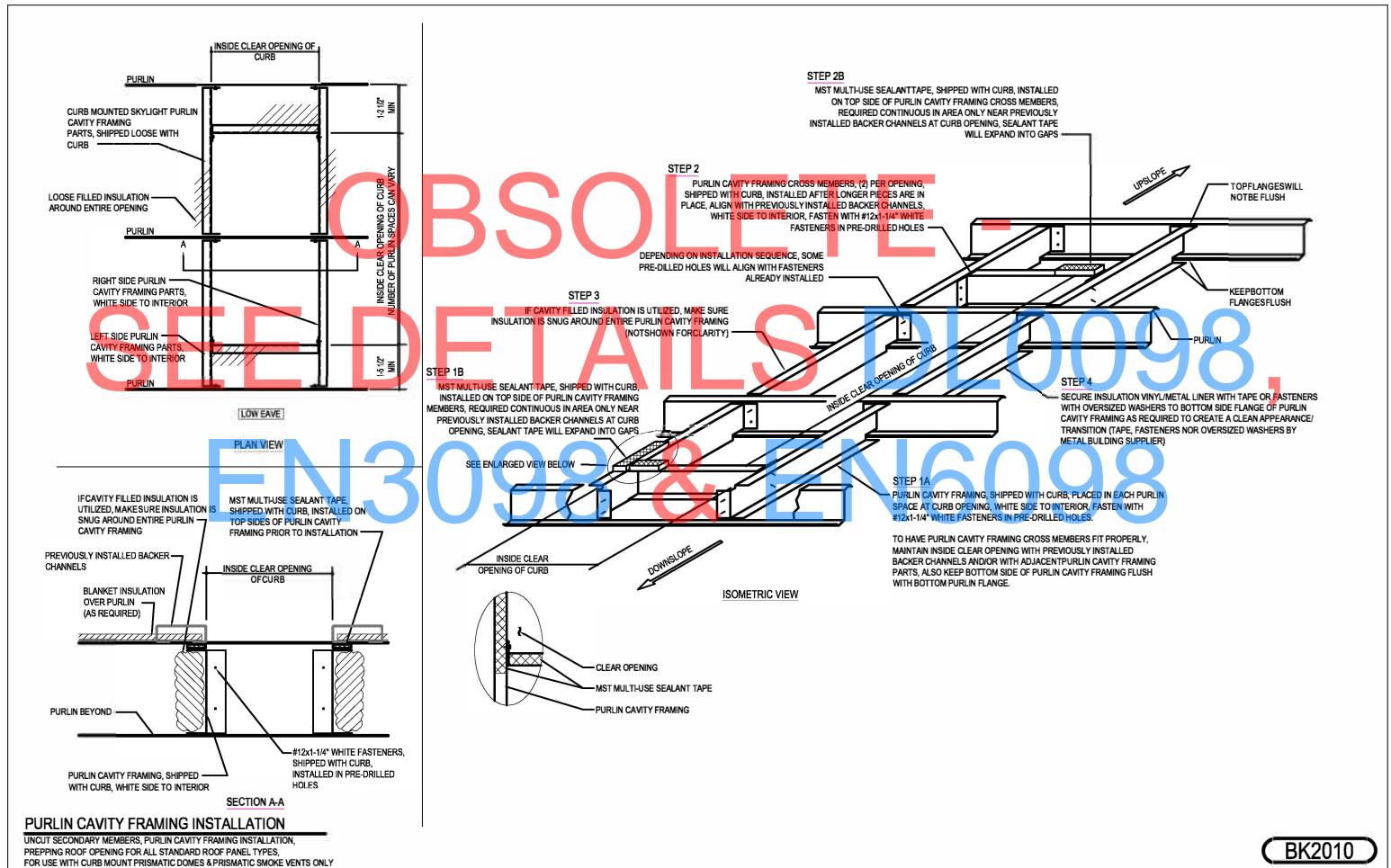
BK2000

Detailer Notes:

1) FOR USE WITH CURB MOUNT PRISMATIC DOMES & PRISMATIC SMOKE VENTS ONLY

BK2010 - PURLIN CAVITY FRAMING INSTALLATION (LIGHTWEIGHT CURBS)

[Download the DWG file by clicking here.](#)



Detailer Notes:

1) N/A